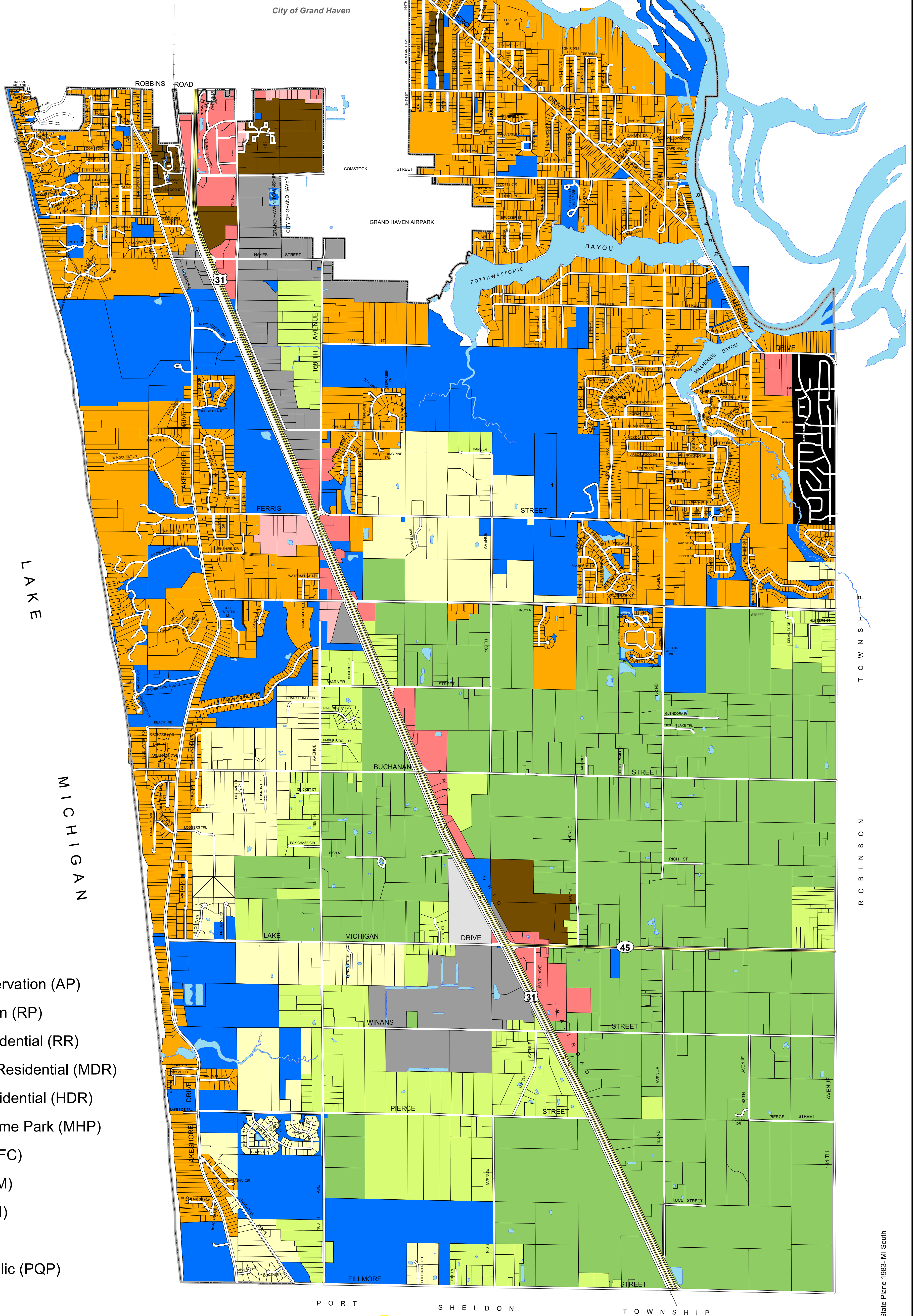




GRAND HAVEN CHARTER TOWNSHIP

# FUTURE LAND USE MAP

Adopted: 03/14/2022

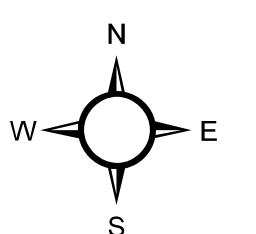
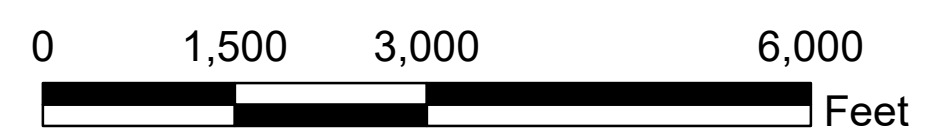


## Legend

### Future Land Use

- Agricultural Preservation (AP)
- Rural Preservation (RP)
- Low Density Residential (RR)
- Medium Density Residential (MDR)
- High Density Residential (HDR)
- Manufactured Home Park (MHP)
- Office/Service (OFC)
- Commercial (COM)
- Light Industrial (LI)
- Industrial (IND)
- Public/Quasi-Public (PQP)

Sources:  
Grand Haven Township Community Development Dept.  
Ottawa County GIS  
Date: 3/16/2022  
*Note: Data is subject to change. GHT does not guarantee the accuracy of this map.*



Coordinate System: State Plane 1983, MI South